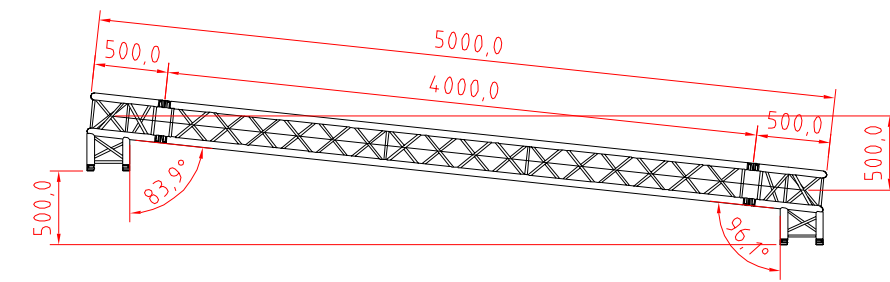
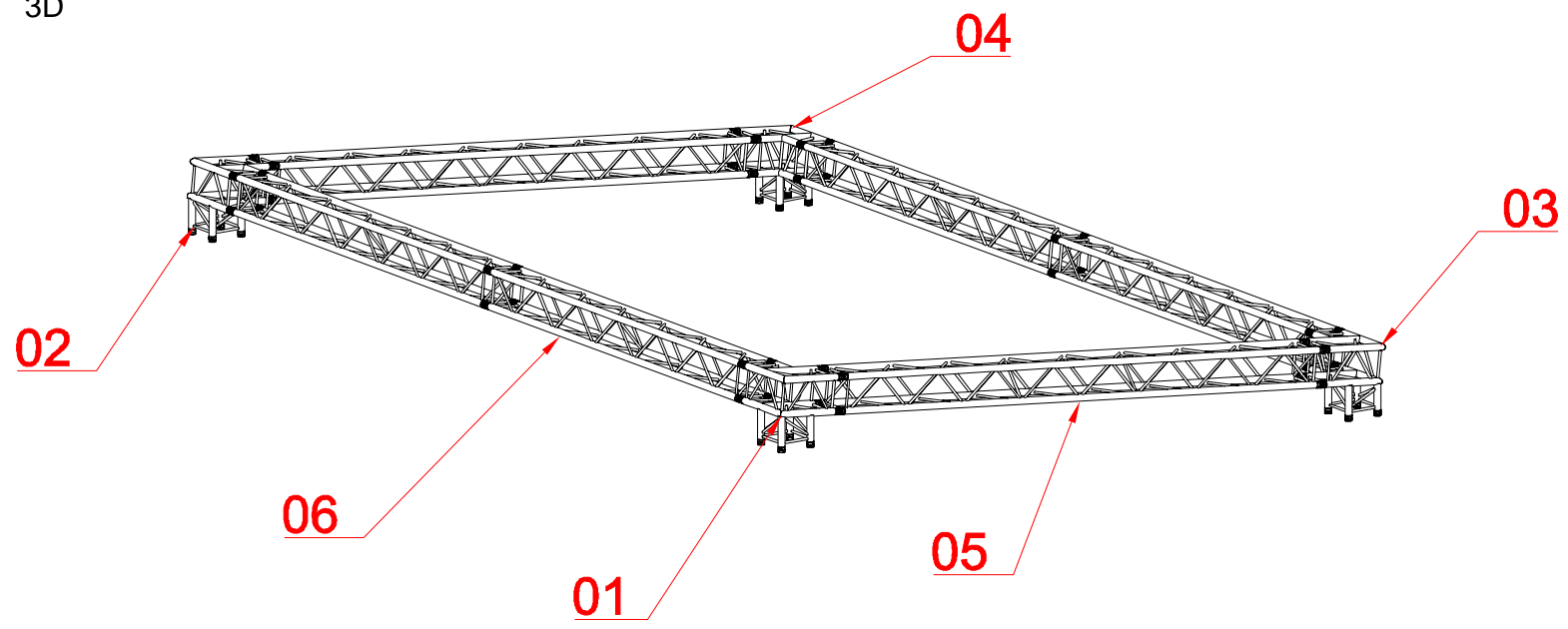
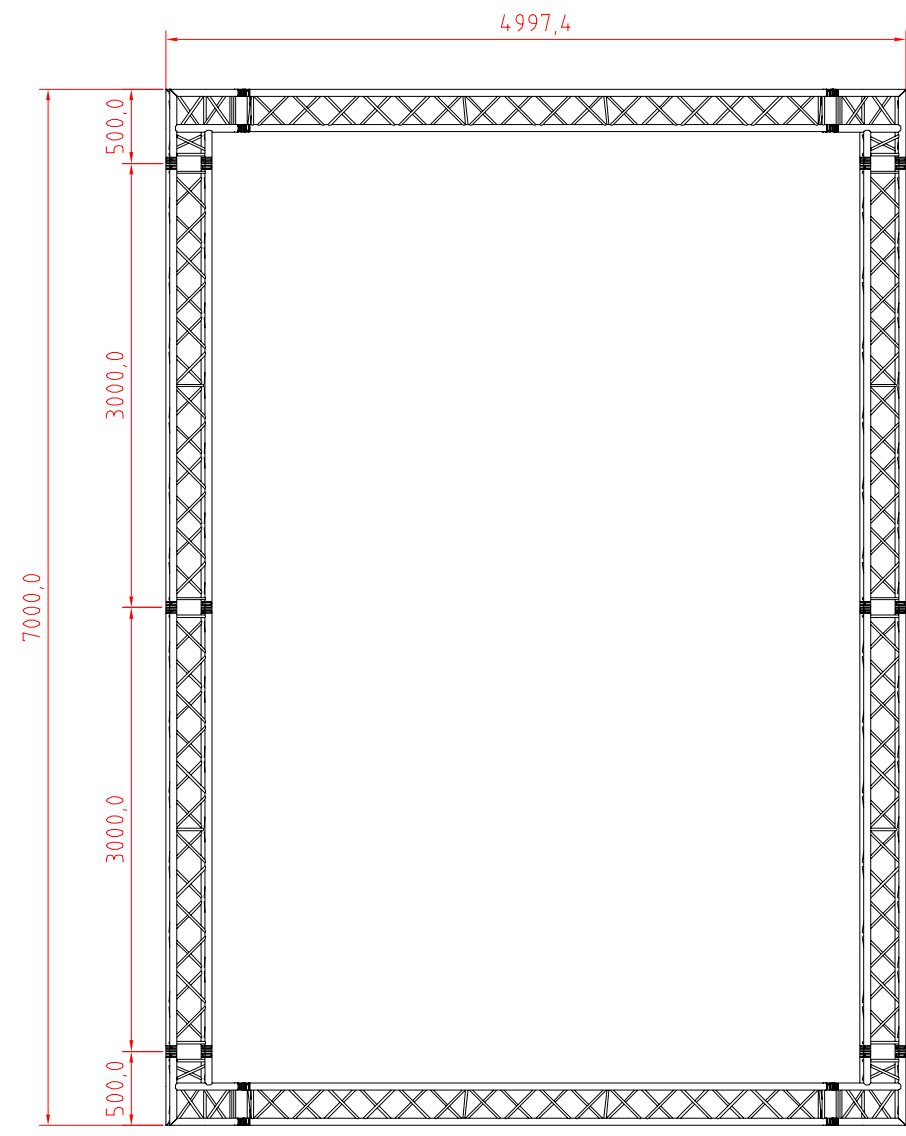


3D



TOP VIEW



FRONT VIEW

ITEM.	QTY.	ARTICLE CODE	DESCRIPTION	NOTE
09	80	CCS6-605	SPIGOT R-SPRING CCS 603	-
08	80	CCS6-603	SPIGOT CCS 600	-
07	40	CCS6-600	COUPLER 600 (30/40-SERIES)	-
06	4	H30V-L300	SQUARE 30 LENGTH 300 CM 48X3	-
05	2	H30V-L400	SQUARE 30 LENGTH 400 CM 48X3	-
04	1	-	SPEC CORNER 93.1DEG LEFT	-
03	1	-	SPEC CORNER 93.1DEG RIGHT	-
02	1	-	SPEC CORNER 83.9DEG LEFT	-
01	1	-	SPEC CORNER 83.9DEG RIGHT	-

For confirmation please sign and fax within two days to: +31-594-851517.
If no response is received within two days the delivery time given will be no longer valid.

NAME: _____
SIGNATURE: _____

	DRAWN BY: MARIUS	DATE: 19.10.2016
	MOD. BY:	DATE MOD.:
	UNIT MEASURE: MM	TREATMENT:
	CAT.NR.: QSR00988	REVISION:
DESCRIPTION:	ART.NR.: QSR00988	STATUS:

H30V ANGLED RIG

THE INFORMATION CONTAINED IN THIS DRAWING IS THE SOLE PROPERTY OF PROLYTE PRODUCTS. ANY REPRODUCTION IN PART OR WHOLE WITHOUT THE WRITTEN PERMISSION OF PROLYTE PRODUCTS IS PROHIBITED.

